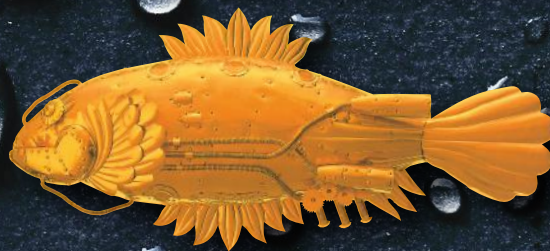


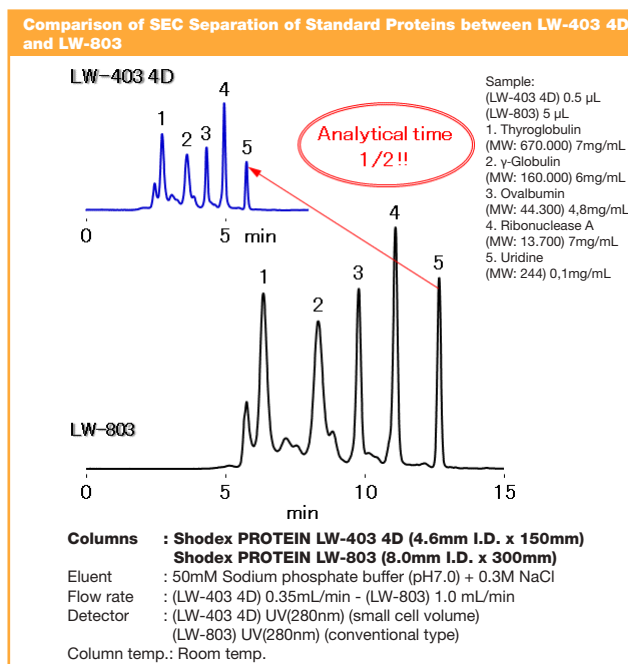
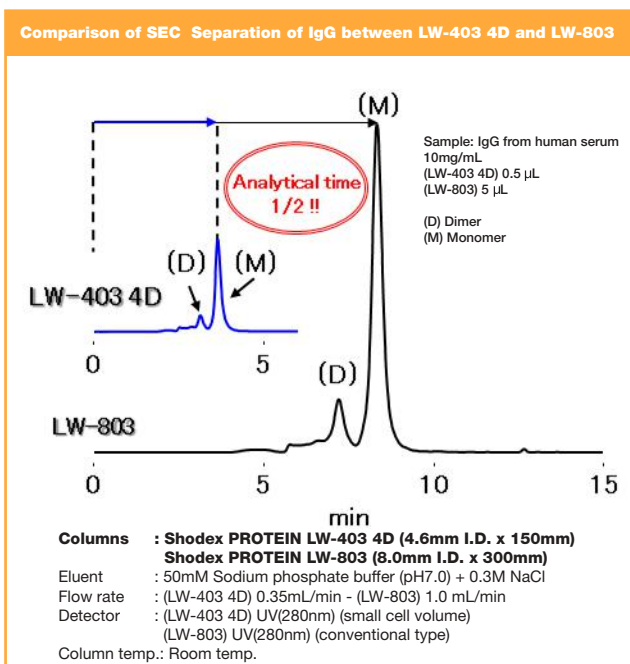
Shodex™



HPLC Columns

Shodex PROTEIN LW-403 4D (rapid analysis semi-micro column):

- Rapid analysis column for LW-803
- Achieves halved analysis time compared with standard column
- Fulfills USP L20, L33 and L59 requirements
- Recommended to be used with semi-micro type devices



Product code	Product name	Plate number (TP/Column)	Particle size (µm)	Column Size I.D. x Length (mm)	Shipping solvent
F6989403	PROTEIN LW-403 4D	>11.000	1.9	4.6 x 150	H ₂ O

Base material: Silica

Usable pH range: 3 to 7,5

**SHOWA
DENKO
EUROPE**

Showa Denko Europe GmbH
Shodex Business
Konrad-Zuse-Platz 3
81829 Munich, Germany

+49 (0) 89 93 99 62 37
info@shodex.de
www.shodex.de
Europe, Middle East,
Africa, Russia