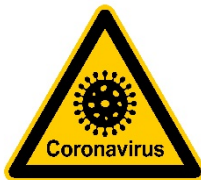
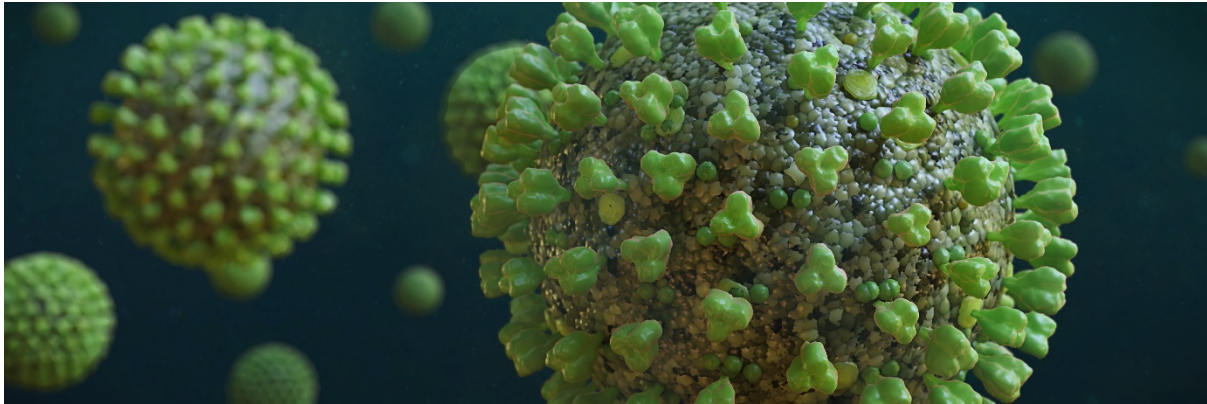


Shodex™



HPLC Columns

Showa Denko Europe GmbH
Shodex HPLC Business
Konrad-Zuse-Platz 3
81829 Munich, Germany
www.shodex.de
info@shodex.de
Tel. +49 89 9399 6237



Information about CoVID-19 Pandemic



Showa Denko is producer of Shodex HPLC column. As the CoVID-19 pandemic is deteriorating, we would like to communicate important information to our customers.

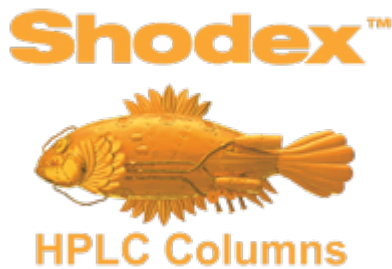
Shodex HPLC columns, molmass standards as well as Shodex refractive index and conductivity detectors are produced in 2 different plants in Japan respectively by SHOWA DENKO K.K. and its affiliate Shoko Scientific Ltd. (detectors only).

A consequent number of the above-mentioned products are stocked in Munich to supply European, African and Middle East customers.

Countermeasures on production site in Japan:

Our production sites in Japan have established several weeks ago already a strict entry control to assure smooth production operation and avoid pandemic propagation on productions sites.

Those measures include temperature control at site entry, systematic entry prohibition for sick employees, several disinfection solutions are located onsite, flexible worktime to assure acyclic use of public transport and to avoid a dense number of employees onsite. In Japan, face masks have been commonly used for many years during regular flew periods and are now being used very intensively. Due to the conditions in production, employees wear protective gloves automatically and are hence avoiding the spread of any virus.



Showa Denko Europe GmbH
Shodex HPLC Business
Konrad-Zuse-Platz 3
81829 Munich, Germany
www.shodex.de
info@shodex.de
Tel. +49 89 9399 6237

Production security:

The above measures are designed to assure smooth production operation, and to-date no CoVID-19 cases in production and delivery have been reported. So far, production has been on schedule with the usual fluctuations related to technical nature.

Situation in Europe:

Showa Denko Europe GmbH sells Shodex products in the Europe, Africa, Middle East, Russia area. All our products are delivered from our warehouse in Munich.

The European Headquarters in Munich has taken extensive security measures to combat the pandemic and to ensure delivery security.

The measures are as follow:

- Home office for all employees who are not directly involved in delivery and stock management
- Only 1 employee is allowed per room in the office / warehouse
- Flexible working hours to be able to use public transport outside rush hour
- Ban access to sick people
- No customer meetings
- Travel is stopped until further notice
- If possible, commuting to the office by car

Hence due to the current situation, I would like to inform you that all correspondence with us (e.g. orders, invoices, other documents) are to be sent in digital form via our emails:

- a) order@shodex.de – for orders exclusively
- b) info@shodex.de – for any other topics

Please be aware, that we just be able to send twice per week form our stock in Munich goods to your destination. The average delivery time will be slightly increased. Thank you for your understanding.

SHODEX supports research:

In addition, it is SHODEX duty and responsibility to support research. Hence we would like to emphasis that some of our products such as:

- the Protein KW-800
- Protein LW series

Shodex™



HPLC Columns

Showa Denko Europe GmbH
Shodex HPLC Business
Konrad-Zuse-Platz 3
81829 Munich, Germany
www.shodex.de
info@shodex.de
Tel. +49 89 9399 6237

- but also the OHpak SB and LB series

can be used for vaccine research. Shall you be interested we will support your research activities with extensive technical support and with a special discount of 40% to all companies working on the research of a CoVID-19 vaccine.

Please take care of yourselves and relatives!

Sincerely yours,

Dr. Christian Hirsch

General Manager

Head of Shodex Business Europe, Africa, Middle East, Russia

Showa Denko Europe GmbH

Shodex Business

Konrad-Zuse-Platz 3

81829 Munich, Germany